

Efficacy and Safety of Emapalumab in Patients with Macrophage Activation Syndrome (MAS) in Systemic Lupus Erythematosus (SLE)

Alexei A. Grom¹, Shoghik Akoghlanian², Melissa Elder³, Renee Modica³, Steve Mallett^{4*}, Brian Jamieson⁵, Fabrizio de Benedetti⁶

¹Department of Pediatrics, University of Cincinnati College of Medicine, Cincinnati, OH, USA; ²Department of Pediatrics, Nationwide Children's Hospital, Ohio State University, Columbus, OH, USA; ³Division of Allergy, Immunology, and Rheumatology, Department of Pediatrics, University of Florida, Gainesville, FL, USA; ⁴Sobi, Stockholm, Sweden; ⁵Sobi, Inc., Morrisville, NC, USA; ⁶Division of Rheumatology, Ospedale Pediatrico Bambino Gesù, IRCCS, Rome, Italy; *At time of study conduct.

CONCLUSIONS

- Emapalumab rapidly controlled MAS in SLE in 75% of patients with an initial inadequate response to high-dose glucocorticoid (GC) treatment
- No patients had MAS recurrence or died during the study
- The efficacy and safety profile of emapalumab in patients with MAS in SLE was similar to patients with MAS in Still's disease^{1,2}
- Median GC dosing was reduced from 5.66 mg/kg/day at baseline to 0.80 mg/kg/day at Week 8
- Median time to any GC tapering (50% reduction from baseline or reduction to dose prior to MAS episode) was 7 days
- These data further support the role of interferon-gamma (IFN γ) as a pivotal cytokine in patients with MAS in SLE

INTRODUCTION

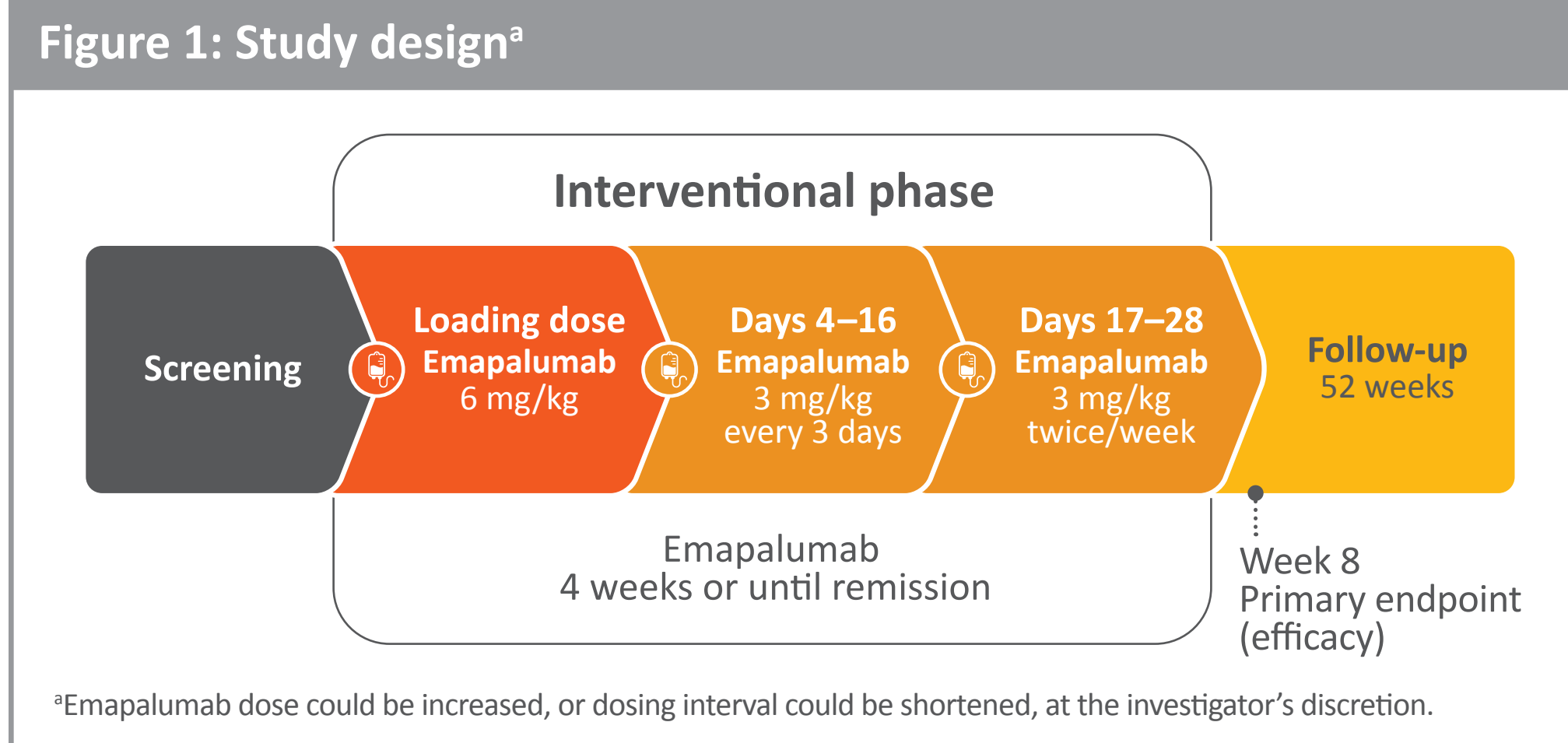
- MAS is a life-threatening complication of rheumatic diseases, including SLE, and is characterized by macrophage activation and systemic hyperinflammation³
- There is substantial preclinical evidence of IFN γ having a role in MAS in SLE, but clinical data confirming these observations is limited³
- Emapalumab, an anti-IFN γ antibody, binds free and receptor-bound IFN γ , providing rapid and targeted neutralization of IFN γ ⁴
- Emapalumab has previously demonstrated sustained control of MAS in patients with Still's disease^{1,2}
- Case studies have suggested that emapalumab may be efficacious in patients with MAS in SLE, including improvement or normalization of clinical manifestations and laboratory parameters^{5,6}

OBJECTIVE

- To investigate the efficacy and safety of emapalumab in the treatment of adults and children with MAS in SLE

METHODS

- An open-label, single-arm interventional study (NI-0501-14 [EMERALD; NCT05001737]) in patients with MAS in rheumatic diseases who had an inadequate response to high-dose intravenous (IV) GCs (Figure 1)
- Two cohorts were enrolled: MAS in Still's disease (Cohort 1) and MAS in SLE (Cohort 2)
- Data from Cohort 2 alone is presented here



METHODS

Inclusion criteria

- A confirmed diagnosis of SLE as per Systemic Lupus according to the International Collaborating Clinics (SLICC) 2012 criteria
- A diagnosis of active MAS where the patient was febrile, had a serum ferritin level >684 ng/mL, and any two of:
 - Platelet count $\leq 181 \times 10^9/L$
 - Aspartate aminotransferase (AST) levels >48 U/L
 - Triglycerides >156 mg/dL
 - Fibrinogen levels ≤ 360 mg/dL
- An inadequate response to high-dose IV GC treatment administered for at least 3 days as per local standard of care, including, but not limited to, pulses of 30 mg/kg methylprednisolone on 3 consecutive days
- In cases of rapid worsening of the patient's condition and/or laboratory parameters, inclusion could occur <3 days after starting high-dose IV GCs

Exclusion criteria

- A diagnosis of primary hemophagocytic lymphohistiocytosis (HLH) or secondary HLH consequent to a neoplastic disease
- Patients treated with canakinumab, Janus kinase inhibitors, tumor necrosis factor α inhibitors, tocilizumab, or anakinra >4 mg/kg/day at the time of emapalumab initiation
- Treatment with etoposide for MAS within 1 month of study enrollment

Endpoints

- The primary endpoint was a complete response (CR) at Week 8 (Study Day 56 \pm 5 days) according to an 8-component composite endpoint comprising the absence of MAS clinical signs and symptoms (visual analog scale [VAS] $\leq 1/10$ cm) plus:
 - White blood cell and platelet counts above the lower limit of normal;
 - Lactate dehydrogenase, AST and alanine aminotransferase $< 1.5 \times$ the upper limit of normal;
 - Fibrinogen >100 mg/dL; and
 - Ferritin decreased by at least 80% from baseline (and <2000 ng/mL)
- Overall response was defined as CR or a partial response (VAS <4 cm and normalization of ≥ 3 MAS-related laboratory parameters)
- Other endpoints included GC tapering, survival, biomarkers (chemokine C-X-C motif ligand 9 [CXCL9], a specific biomarker primarily induced by IFN γ activity, and soluble CD25 [sCD25], a marker of T-cell activation) and safety
- The lower limit of quantitation (LLOQ) for CXCL9 was 80 ng/L

Statistics

- No hypothesis test was performed because this cohort was not fully enrolled (n=8) because of difficulties in recruitment
- Time-to-event analyses were performed using the Kaplan-Meier method

RESULTS

Baseline characteristics

- Eight patients with an inadequate response to high-dose GCs were enrolled (5 [62.5%] females), with a median age of 16 years (range, 2–24) (Table 1)
- All patients had lung and/or hepatic involvement
- All patients received concomitant GCs and 1 patient received concomitant anakinra; no other treatments for SLE were co-administered

Table 1: Demographics and baseline characteristics

	N=8
Age, years, median (range)	16 (2–24)
Age ≥ 17 years, n (%)	4 (50)
Sex, female, n (%)	5 (62.5)
Lung and/or hepatic involvement, n (%)	8 (100)
Receiving dialysis or hemofiltration, n (%)	1 (12.5)
MAS clinical signs and symptoms (VAS), cm, median (range)	7.75 (3–9)

MAS, macrophage activation syndrome; VAS, visual analog score.

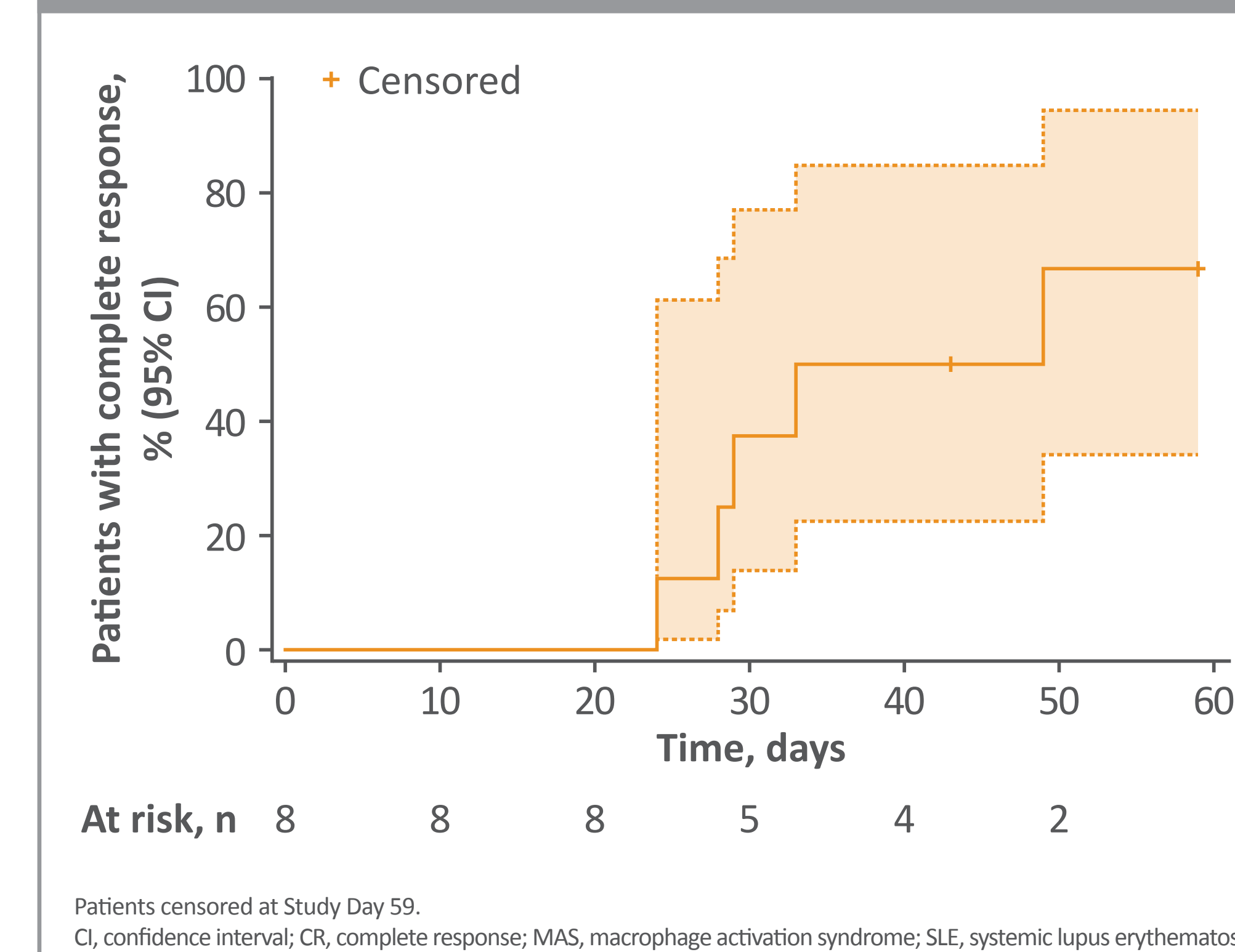
Treatment duration

- Median duration of emapalumab treatment was 16 days (range, 7–44)
- Seven (87.5%) patients completed the study

Response rates

- At Week 8, four (50%) patients had achieved a CR with a median time to first CR of 41 days (Figure 2)
- Seven (87.5%) patients achieved a CR at any time up to Day 56 (± 3 days)
- Six (75%) patients achieved an overall response at Week 8 with a median time to first overall response of 26 days
- No recurrent MAS events were reported during 1 year of follow-up

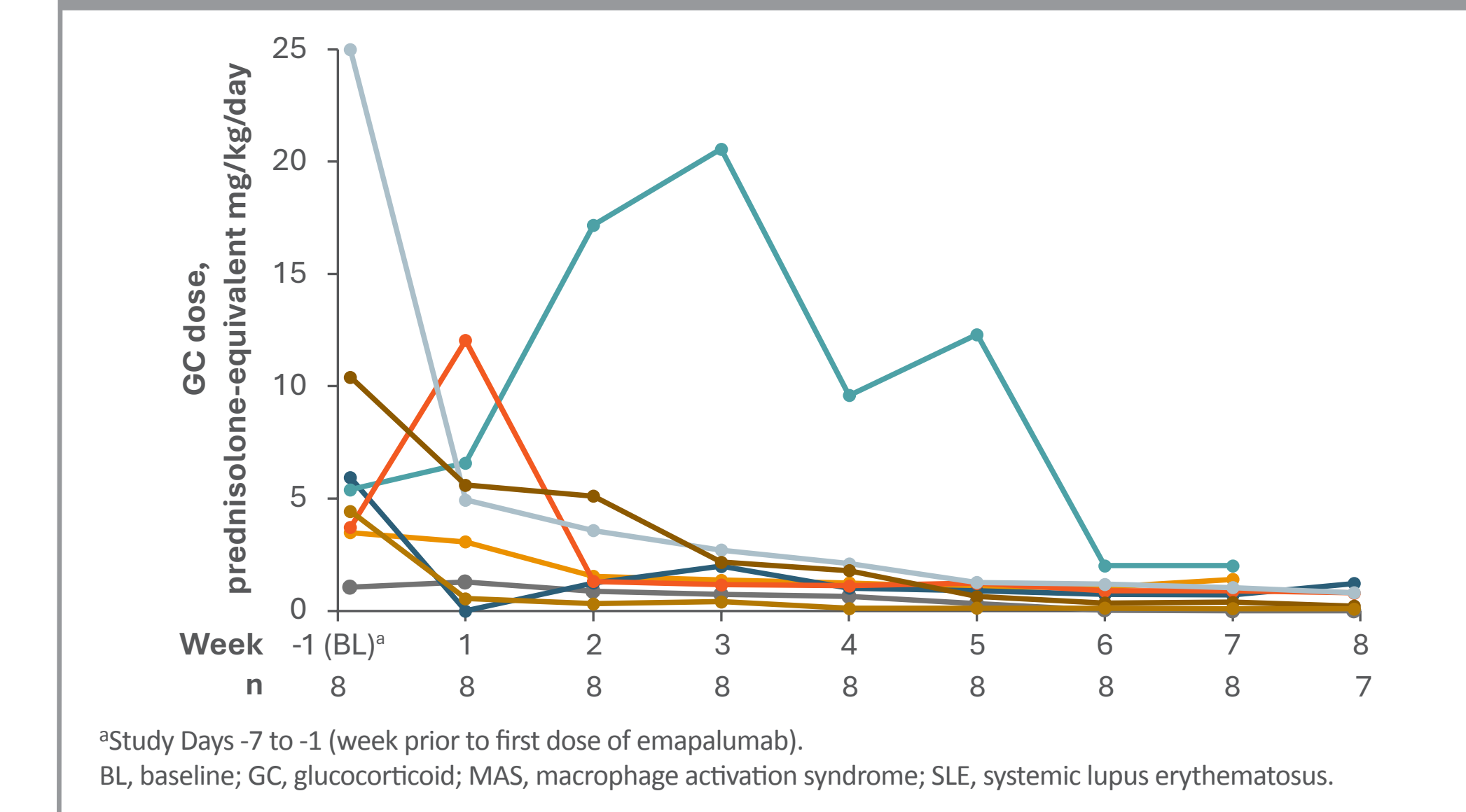
Figure 2: Time to CR in patients with MAS in SLE administered emapalumab



GC tapering

- Median GC dose reduced from 5.66 mg/kg/day at baseline to 0.80 mg/kg/day at Week 8 (Figure 3)
- Median time to any GC tapering (50% reduction from baseline or reduction to dose prior to MAS episode) was 7 days
- Median time to weekly average daily GC dose of ≤ 1 mg prednisolone-equivalent/kg/day was 38.5 days

Figure 3: GC dosing in individual patients with MAS in SLE administered emapalumab (N=8)



Biomarkers

- Median (range) CXCL9 levels were reduced from 623 ng/L (below LLOQ–9405; n=6) to 191 (40–471; n=5) at Day 4, 71 (40–104; n=4) at Day 7, and below LLOQ (range, below LLOQ–383; n=5) at Day 56
- Median sCD25 levels were reduced from 4954 ng/L (range, 2187–7907; n=6) to 2257 ng/L (range, 1294–3430; n=5) at Day 56

Safety

- No new safety concerns were identified
- Four serious adverse events were reported in 4 patients (Table 3)
- Infection adverse events (n=15) were reported by 7 patients (87.5%)
- One patient discontinued because of an adverse event (progressive decrease in prothrombin activity)
- No infusion-related reactions occurred
- No deaths occurred

Table 2: Adverse events in patients with MAS in SLE administered emapalumab

n (%)	N=8
TEAEs	8 (100)
TEAEs related to emapalumab	3 (37.5)
Serious TEAEs	4 (50.0) ^a
TEAEs leading to emapalumab withdrawal	1 (12.5) ^b
Infection TEAEs	7 (87.5) ^{c,d}

^aAbscess limb, condition aggravated, prothrombin level decreased, and lupus nephritis (n=1 each).
^bProgressive decrease in prothrombin activity. ^cURTI (n=3 events), cytomegalovirus infection (n=2 events), sinusitis (n=2 events), abscess limb (n=1 event), COVID-19 (n=1 event), cystitis (n=1 event), rotavirus infection (n=1 event), UTI (n=1 event), viral pharyngitis (n=1 event). ^dOne EBV and one CMV infection event were considered unrelated to emapalumab; one CMV-EBV co-infection event as considered related to emapalumab. All three patients were receiving antiviral prophylaxis during treatment. EBV, Epstein-Barr virus; CMV, cytomegalovirus; MAS, macrophage activation syndrome; SLE, systemic lupus erythematosus; URTI, upper respiratory tract infection; UTI, urinary tract infection; TEAE, treatment-emergent adverse event.

Disclosures

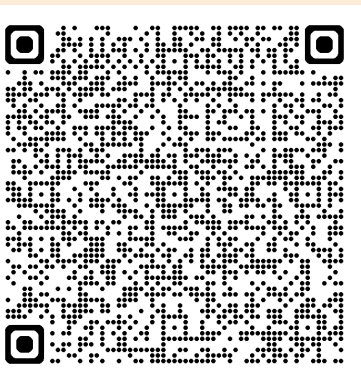
A. Grom: Consultant to Novartis, Sobi, Kiniksa; Research grants/contracts from NIH, Novartis, Sobi, SJIA Foundation; Royalties from Up-to-Date.
S. Akoghlanian: Consultant and research grants from Sobi. M. Elder: None. R. Modica: Advisor or Review Panel Member for Sobi. S. Mallett: Consultant to Sobi.
B. Jamieson: Employee of Sobi, Inc. F. De Benedetti: Consultant and research grants from Sobi, Novartis, Eli Lilly, Apollo, Sanofi, AbbVie, Kiniksa.

References

1. De Benedetti F, et al. *Ann Rheum Dis* 2023;82:857–865; 2. Grom AA, et al. *Arthritis Rheumatol* 2024;76(suppl 9):L19;
3. Schuler G. *J Rheumatol* 2022;49:1082–1084; 4. Jacqmin P, et al. *Br J Clin Pharmacol* 2022;88:2128–2139;
5. Chen J, et al. *Front Immunol* 16:1676749; 6. Guo R, et al. *Hong Kong Med J* 2025;31:387–390.

Acknowledgements

This study was funded by Sobi. The authors wish to acknowledge the investigators, participants and their families for their contribution to the studies. The authors also wish to acknowledge Kathleen York, CMPP from Sobi (Basel, Switzerland) for publication coordination and Blair Hesp, PhD CMPP of Kininc Medical Communications Ltd. (Dunedin, New Zealand) for medical writing and editorial support, funded by Sobi, based on the authors' input and direction, and in accordance with Good Publication Practice (GPP) 2022 guidelines (<https://www.ismpp.org/gpp-2022>). This poster was previously presented at the Pediatric Rheumatology Symposium (PRSYM) 2026, March 18–21, 2026, Minneapolis, MN, USA.



Copies of this poster obtained through QR Code are for personal use only